



# Our Largest Hyperscale Data Center Campus - Mumbai 03



## Tried. Tested. Trusted.

*For over 22 years now  
India's leading digital infrastructure partner*



# Our Largest Hyperscale Data Center Campus - Rabale, Navi Mumbai



**200 MW**  
IT capacity

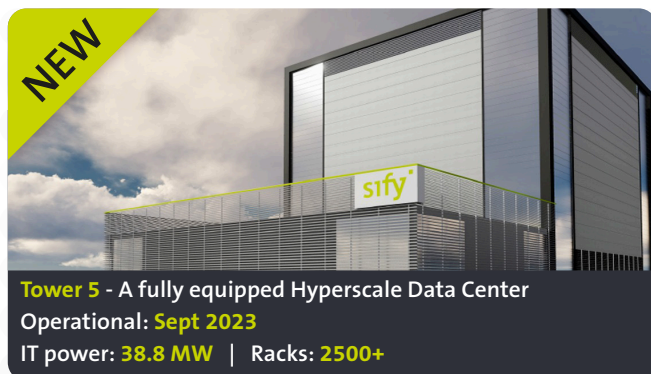
**15000+**  
Racks

**10 levels**  
of access  
control

**4 dedicated**  
**fiber**  
**paths**

**99 MW**  
of Solar &  
Wind Power

'India's largest public and private banks, world's leading OTT, media streaming companies, global social networking platforms and 50+ enterprises are hosted in Sify's Rabale DC campus.'



**Tower 5** - A fully equipped Hyperscale Data Center  
Operational: **Sept 2023**  
IT power: **38.8 MW** | Racks: **2500+**

## Campus Advantages:

Built-to-Suit and multi-tenant Data Centers in a single campus with strong network interconnection via secured multi-path CrossConnect

On-premises 110 KV substation for tower I, II and III and another 220 KV GIS substation for Tower IV, V and VI

Large footprint tower of G+8 layout

Access to multiple Hyperscale clouds, OTT ecosystem & internet exchange peering points with low latency access

6300 mm floor to floor height with 2100 kg/m<sup>2</sup> floor load bearing capacity

K4 rated Security at the campus entry

**Towers 6 & 7 will be operational in early 2025. Towers 8-10 are currently in planning phase. Each tower is designed for up to 40 MW IT power and 2000+ racks.**



# Our Data Center Footprint

## Mumbai 01: Vashi

**Type:** 1<sup>st</sup> Commercial Data Center in India  
**Operational:** 2000  
**IT Power:** 0.9 MW  
**Racks:** 375



## Mumbai 02: Airoli

**Type:** 1<sup>st</sup> Cloud Data Center in India  
**Operational:** 2008  
**IT Power:** 5.4 MW  
**Racks:** 1345



## Mumbai 03: Rabale

**Type:** Hyperscale Data Center Campus  
**Operational:** 2014 | 5 New Towers 2023 onwards  
**IT Power:** 200 MW | **Racks:** 15000+



## Noida 01:

**Type:** 1<sup>st</sup> Green Data Center in Portfolio  
**Operational:** 2012  
**IT Power:** 10.8 MW  
**Racks:** 2100



## Noida 02:

**Type:** Hyperscale Data Center Campus  
**Operational:** Tower B: 2023  
Tower A: 2024 | Tower C: 2025  
**IT Power:** 78 MW  
**Racks:** 13000+



## Hyderabad 01: Financial District

**Type:** Hyperscale Data Center  
**Operational:** 2019  
**IT Power:** 14.4 MW  
**Racks:** 2400



## Hyderabad 02: Fab City

**Type:** Hyperscale Data Center Campus  
**Operational:** 2024  
**IT Power:** up to 250 MW  
**Racks:** 20000+



## Bengaluru 01: Electronic City

**Type:** Purpose-built Data Center  
**Operational:** 2006  
**IT Power:** 4 MW | **Racks:** 600+



## Bengaluru 02: KIADB Aerospace Park

**Type:** Hyperscale Data Center  
**Operational:** 2025  
**IT Power:** 20 MW | **Racks:** 3000+



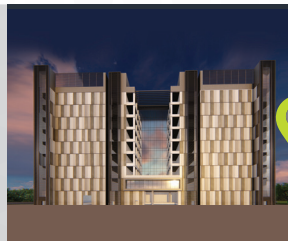
## Chennai 01: TIDEL Park

**Type:** India's 1<sup>st</sup> Purpose-built Data Center  
**Operational:** 2001  
**IT Power:** 3.6 MW | **Racks:** 800+



## Chennai 02: Siruseri

**Type:** Hyperscale Data Center Campus  
**Operational:** Tower B: 2023  
Tower A: 2024 | Tower C: 2025  
**IT Power:** 78 MW  
**Racks:** 13000+



## Kolkata:

**Type:** Cloud Data Center  
**Operational:** 2019  
**IT Power:** 2.2 MW  
**Racks:** 400+



**11 pan-India Data Centers**

**with 100+ MW IT Power.**

**To add 350+ MW capacity by 2025.**

# Take Advantage of Data Center Automation

Automating critical processes in your Data Center, such as application delivery, monitoring, scheduling, and maintenance, can be extremely beneficial.

Sify Data Centers offer various automation benefits like real-time visibility into key Data Center operations and assets, and optimum utilization of resource capacity.

This ensures accurate demand forecasting and capacity planning to help you proactively eliminate downtime.

**Real-time Visibility • Measurability • Predictability • Efficiency**

## ESG Focus

### Going Green With Carbon-neutral and Energy-efficient Data Centers



#### Data Center MEP

- High efficiency for equipment even at low utilization levels
- Selection of equipment with high energy saving parameters
- Right redundancy levels



#### Sustainable Processes

- ASHRAE Guidelines
- Carbon abatement policy
- ISO 14001 Environmental Certification
- Low PUE, WUE



#### Green Power Contracts

- Contracted 200+ MW Green power via Power Purchase Agreements
- Additional nation-wide Green power for future projects

**Up to 79% renewable energy\***

## Customized, Built-to-Suit Hyperscale Data Centers

Our Built-to-Suit (BTS) Data Centers are tailored to meet your unique requirements. We offer unbeatable capabilities which are fully compliant with global industry-leading certifications, building codes, safety standards, and other regulatory standards.

**Dedicated  
Tower**

**Built as per  
specifications**

**Meets and  
exceeds  
International  
standards**

**Multipath  
Network  
Interconnect**

*\*As per regulation*



# Sify - Your Digital Bridge for Transformation

Sify is your digital bridge for transformation, built on our world class digital IT infrastructure, digitalized services & core digital platforms.

## Delivering agility, flexibility, and choices to accelerate your digital transformation



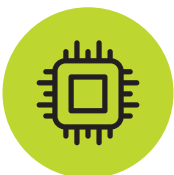
### Infrastructure for Digital IT

- Cloud adjacent Data Centers
- Hosted Private Cloud as a Service
- Hyperscale Cloud Services
- Hosted AI Platform (Multi Instance GPU) as a Service
- On Demand Customer Provisioned Network
- Hyperscale Cloud Interconnects
- Edge Connect Services - Pvt 5G & Wi-Fi
- Zero Trust Security
- SD WAN & SASE



### Digitalized Services (AI/ ML powered)

- IT Managed Services
- Network Managed Services
- Security Managed Services
- Multi-Cloud Platform
- App Modernization
- Full Stack Observability Platform



### Core Digital

- Digital Asset Management Platform
- Application Managed Services (SAP, Microsoft, Oracle)
- Intelligent Retail Management Platform
- Digital Content Platform (AR/VR)
- Digital e-Learning Platform
- Digital Assessment Platform

## Why Trust Sify Data Centers for your Enterprise

India's trusted Data Center partner with 22 years of experience, serving all segments

11 pan-India Data Centers with 100+ MW IT Power

To add 350+ MW capacity by 2025

200+ MW renewable energy contracted

Truly carrier-neutral

Continued investments in automation and smart BMS

Operational excellence with industry-leading 99.999% uptime

600+ premier enterprises hosted in Sify DCs

Rich interconnect ecosystem

Built-to-Suit capabilities

Multi and hybrid cloud operations center

# Trusted by Leading Enterprises Across the Globe



3 out of 4 hyperscalers are hosted with Sify



Global OTT players chose Sify's Data Center to connect to millions of subscribers



World's leading social media network is hosted in Sify's Data Center



Europe's leading payment gateway provider chose Sify's Data Center



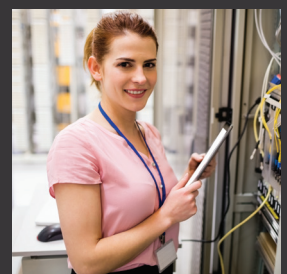
India's top 5 banks are hosted with Sify



India's largest digital wallet and new-age fintechs are hosted with Sify



India's largest general insurance company and large NBFCs chose Sify's Data Center



Sify's Data Centers host more than 600+ premier enterprises across industries

## Certifications



## Recognitions

### Gartner

Sify is a Niche Player in Gartner's MQ for Managed Network Services Global 2022

Recognition in Market Guide for Public Cloud Managed and Professional Services Providers APAC 2021

Recognition in Market Guide for Security Testing & Consulting Services in India 2021

Notable vendor in MQ for Data Center Outsourcing and Hybrid Infrastructure Managed Services, APAC 2019



Major Player in MarketScape for Managed Cloud Services APAC 2021



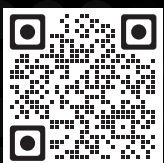
The Economic Times Iconic Brands 2020 Hybrid Multi Cloud



Fast track your digital transformation journey with a more agile, resilient, scalable, digital-ready IT infrastructure supported by a trusted partner who is charting India's digital growth story.

### Sify Data Centers

Mumbai | Noida | Hyderabad | Bengaluru | Chennai | Kolkata



Reimagine your  
Data Center experience

# sify