

The Sify logo is positioned in the top right corner. It consists of the word "sify" in a lowercase, sans-serif font, with a small square dot above the letter 'y'. The logo is yellow.

Tried. ■  
Tested. ■  
Trusted. ■

*For over 22 years now.*

*Your leading digital infrastructure partner*

Through two decades of thought leadership in IT infrastructure, Sify has been delivering transformative business value and a fulfilling **data center** experience to enterprises across the globe.

# Sify cloud@core™

Sify is a leading **digital infrastructure** partner, helping customers achieve their digital ambition through **cloud@core services**, built on its world class **Data Centers, Cloud & Network** assets and wide portfolio of **professional and digital services**.

cloud@core delivers agility, flexibility, and choices for creating a hybrid cloud-led digital infrastructure.

## Robust Hyperscale Data Centers Designed for the Hybrid Cloud



### Cloud Data Centers

11 Pan-India DCs with 100 MW capacity. Adjacent Hyperscale CSPs. To add 350 MW by 2025.



### Virtual Private Cloud

Enterprise Cloud grid available with data centers



### CloudConnect

Hyperscale Connectivity to AWS, Azure, GCP, Oracle 'DC inter-connect' data superhighway to 50 on-net data centers



### Applications

App Modernization, Kubernetes, Industry Solutions as Services



### Multi Cloud Operations Center

Gen V Multi Cloud Platform, Cloud, Data Center, Security, Network, Applications



### Network

Largest MPLS network (by connections) 3100+ PoPs across 1600 towns in India

## Why You Should Trust Sify Data Centers for Your Enterprise

**India's trusted Data Center partner with 22 years of experience, serving all segments**

11 pan-India data centers with 100 MW IT Power

To add 350 MW capacity by 2025

200 MW renewable energy contracted

Truly carrier-neutral

Continued investments in automation and smart BMS

Operational excellence with industry-leading 99.999% uptime

600+ premier enterprises hosted in Sify DCs

Rich interconnect ecosystem

Built-to-suit capabilities

Multi and hybrid cloud operations center

# Our Data Center Footprint



**Mumbai 01: Vashi**  
Type: 1<sup>st</sup> Commercial Data Center in India  
Operational: 2000  
IT Power: 1 MW  
Racks: 375



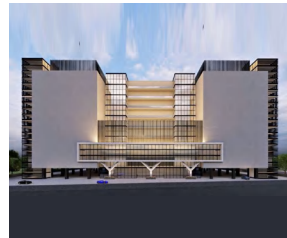
**Mumbai 02: Airoli**  
Type: 1<sup>st</sup> Cloud Data Center in India  
Operational: 2008  
IT Power: 4.1 MW  
Racks: 1345



**Mumbai 03: Rabale**  
Type: Hyperscale Data Center Campus  
Operational: 2014 | 5 New Towers 2023 Onwards  
IT Power: 200 MW | Racks: 15000+



**Noida 01**  
Type: 1<sup>st</sup> Green Data Center in Portfolio  
Operational: 2012  
IT Power: 10.8 MW  
Racks: 2100



**Noida 02**  
Type: Hyperscale Data Center Campus  
Operational: Tower B: 2023  
Tower A: 2024 | Tower C: 2025  
IT Power: 78 MW  
Racks: 13000+



**Hyderabad 01: Financial District**  
Type: Hyperscale Data Center  
Operational: 2019  
IT Power: 14.4 MW  
Racks: 2400



**Hyderabad 02: Fab City**  
Type: Hyperscale Data Center Campus  
Operational: 2024  
IT Power: up to 250 MW  
Racks: 20000+



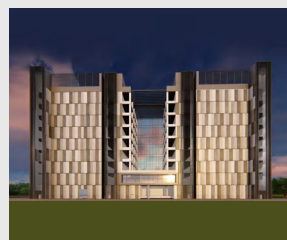
**Bengaluru 01: Electronic City**  
Type: Purpose-built Data Center  
Operational: 2006  
IT Power: 4 MW | Racks: 600+



**Bengaluru 02: KIADB Aerospace Park**  
Type: Hyperscale Data Center  
Operational: 2025  
IT Power: 18 MW | Racks: 3000+



**Chennai 01: TIDEL Park**  
Type: India's 1<sup>st</sup> Purpose-built Data Center  
Operational: 2001  
IT Power: 4 MW | Racks: 500



**Chennai 02: Siruseri**  
Type: Hyperscale Data Center Campus  
Operational: Tower B: 2023  
Tower A: 2024 | Tower C: 2025  
IT Power: 78 MW  
Racks: 13000+



**Kolkata**  
Type: Cloud Data Center  
Operational: 2019  
IT Power: 2 MW  
Racks: 350

**11 pan-India data centers with 100 MW IT Power.  
To add 350 MW capacity by 2025.**

# Our Upcoming 2<sup>nd</sup> Hyperscale Data Center Campus in North India



**NOIDA 02** is Sify's second hyperscale data center campus in Delhi NCR with a total capacity of 78 MW and 13000+ racks. Noida 01 and Noida 02 will be an interconnected campus through 4 diverse fiber paths which will provide direct connectivity to hyperscalers, OTT players and Cloud Connect Nodes.

“ At the Uttar Pradesh Investors Summit held in 2022, Sify announced one of the largest investments in the Data Center space in India; INR 2692 crores to be invested in Noida. ”

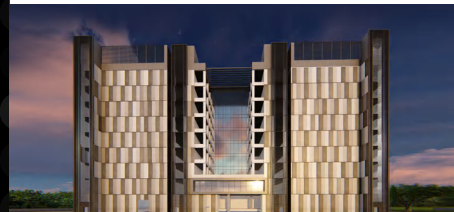
## Our Upcoming Data Centers in West & South India.

### MUMBAI 03: RABALE



**Type:** Hyperscale Data Center Campus  
**Operational:** 2014 | 5 new towers 2023 onwards  
**IT Power:** 200 MW | **Racks:** 15000+

### CHENNAI 02: SIRUSERI



**Type:** Hyperscale Data Center Campus  
**Operational:** 2023 onwards  
**IT Power:** 78 MW | **Racks:** 13000+

### HYDERABAD 02: FAB CITY



**Type:** Hyperscale Data Center Campus  
**Operational:** 2024  
**IT Power:** up to 250 MW | **Racks:** 20000+

# Take Advantage of Data Center Automation

Automating critical processes in your data center, such as application delivery, monitoring, scheduling, and maintenance, can be extremely beneficial.

Smarter data centers offer various automation benefits like real-time visibility into key data center operations and assets, and optimum utilization of resource capacity.

This ensures accurate demand forecasting and capacity planning to help you proactively predict downtime.

Real-time Visibility

Measurability

Predictability

Efficiency

## ESG Focus

### Going Green With Carbon-neutral and Energy-efficient Data Centers



#### Data Center MEP

- High efficiency for equipment even at low utilization levels
- Selection of equipment with high energy saving parameters
- Right redundancy levels



#### Sustainable Processes

- ASHRAE Guidelines
- Carbon abatement policy
- ISO 14001 Environmental Certification
- Low PUE, WUE



#### Green Power Contracts

- Contracted 200 MW Green power via Power Purchase Agreements
- Additional nation-wide Green power for future projects

Reduction in carbon footprint by 28% during 2021-22

## Customized, Built-to-Suit Hyperscale Data Centers

Our Built-to-Suit (BTS) data centers are tailored to meet your unique requirements. We offer unbeatable capabilities which are fully compliant with global industry-leading certifications, building codes, safety standards, and other regulatory standards.

Operational  
Excellence

Health, Safety &  
Environmental

Cost  
Model

Compliance

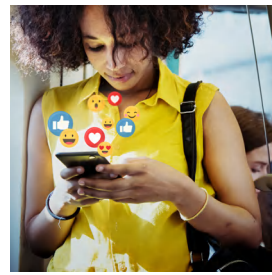
# Trusted by Leading Enterprises Across the Globe



3 out of 4 hyperscalers are hosted with Sify



Global OTT players chose Sify's data center to connect to millions of subscribers



World's leading social media network is hosted in Sify's data center



Europe's leading payment gateway provider chose Sify's data center



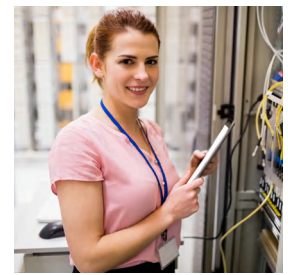
India's top 5 banks are hosted with Sify



India's largest digital wallet and new-age fintechs are hosted with Sify



India's largest general insurance company and large NBFCs chose Sify's data center



Sify's data center host more than 600+ premier enterprises across industries

## Certifications



## Recognitions

### Gartner

Sify is a Niche Player in Gartner's MQ for Managed Network Services Global 2022

Recognition in Market Guide for Public Cloud Managed and Professional Services Providers APAC 2021

Recognition in Market Guide for Security Testing & Consulting Services in India 2021

Notable vendor in MQ for Data Center Outsourcing and Hybrid Infrastructure Managed Services, APAC 2019



Major Player in MarketScape for Managed Cloud Services APAC 2021



The Economic Times Iconic Brands 2020 Hybrid Multi Cloud



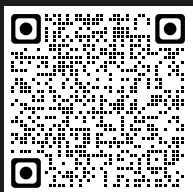
Data Center Transformation Services 2018



Fast track your digital transformation journey with a more agile, resilient, scalable, digital-ready IT infrastructure supported by a trusted partner who is charting India's digital growth story.

### Sify Data Centers

Mumbai | Noida | Hyderabad | Bengaluru | Chennai | Kolkata



[www.sifytechnologies.com](http://www.sifytechnologies.com)  
[marketing@sifycorp.com](mailto:marketing@sifycorp.com)

